



### HOT SPOTS FOR SPECTATORS:

- |  |   |  |
|--|---|--|
| <ul style="list-style-type: none"> <li>Swimming start: Schüttdorf lido and transition zone</li> <li>Lake promenade, transition area Alois Latini stadium</li> <li>Finish line and centre of Zell am See</li> <li>Passing through Bruck - the athletes come here twice</li> </ul> | <ul style="list-style-type: none"> <li>Dienten with refreshment station</li> <li>Entrance to Maria Alm</li> <li>Uphill at the Filzensattel (highest point)</li> <li>Short uphill next to Gerling Restaurant</li> <li>Passing through Maishofen</li> </ul> | <ul style="list-style-type: none"> <li>Passing through Zell am See</li> <li>Kaprun outside Neumair store</li> <li>Kaprun Castle with short steep uphill</li> <li>Thumersbach refreshment station, turning point on the running course</li> </ul> |
|--|---|--|

the hashtag: #zellamseekaprun

Thank you!



[zellamsee-kaprun.com/ironman](http://zellamsee-kaprun.com/ironman)

# WARNING:

## ROAD POLICE ANNOUNCEMENT

Due to the IRONMAN 70.3 there will be large-scale road closures only on Sunday in Zell am See-Kaprun.

**NIGHTRUN Zell am See-Kaprun**  
**Friday, 29.08.2025, start 5.30 pm**  
**B 311 PASSABLE AT ANY TIME!**

**Road closure between 5.30 and 7 pm**  
 Roads affected: Anton-Wallner-Straße – Saalfeldner Straße from junction Seegasse to junction Strubergasse underpass – Sebastian-Hörl-Straße – Esplanade to approx. at Seewirt



[zellamsee-kaprun.com/ironman](http://zellamsee-kaprun.com/ironman)

**IRONKIDS Zell am See-Kaprun**  
**Saturday, 30.08.2025, start 1 pm**  
**B 311 PASSABLE AT ANY TIME!**

**Road closure between 12.30 and 4 pm**  
 Roads affected: Anton-Wallner-Straße – Saalfeldner Straße from junction Seegasse to car park – Strubergasse – Esplanade to Seevilla Freiberg – underpass car park – Sebastian-Hörl-Straße – Kirchgasse – Bahnhofstraße



IRONMAN 70.3 Zell am See-Kaprun, Sunday, 31.08.2025, start 11 am

Road closure due to CYCLING RACE  
between 11 am and 5 pm

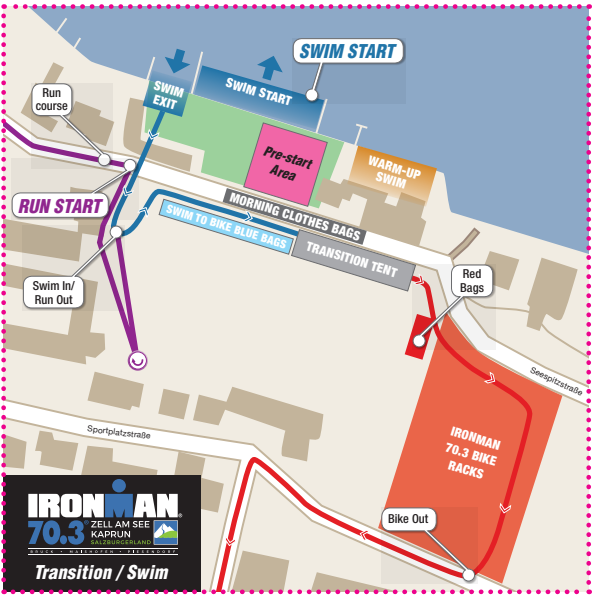
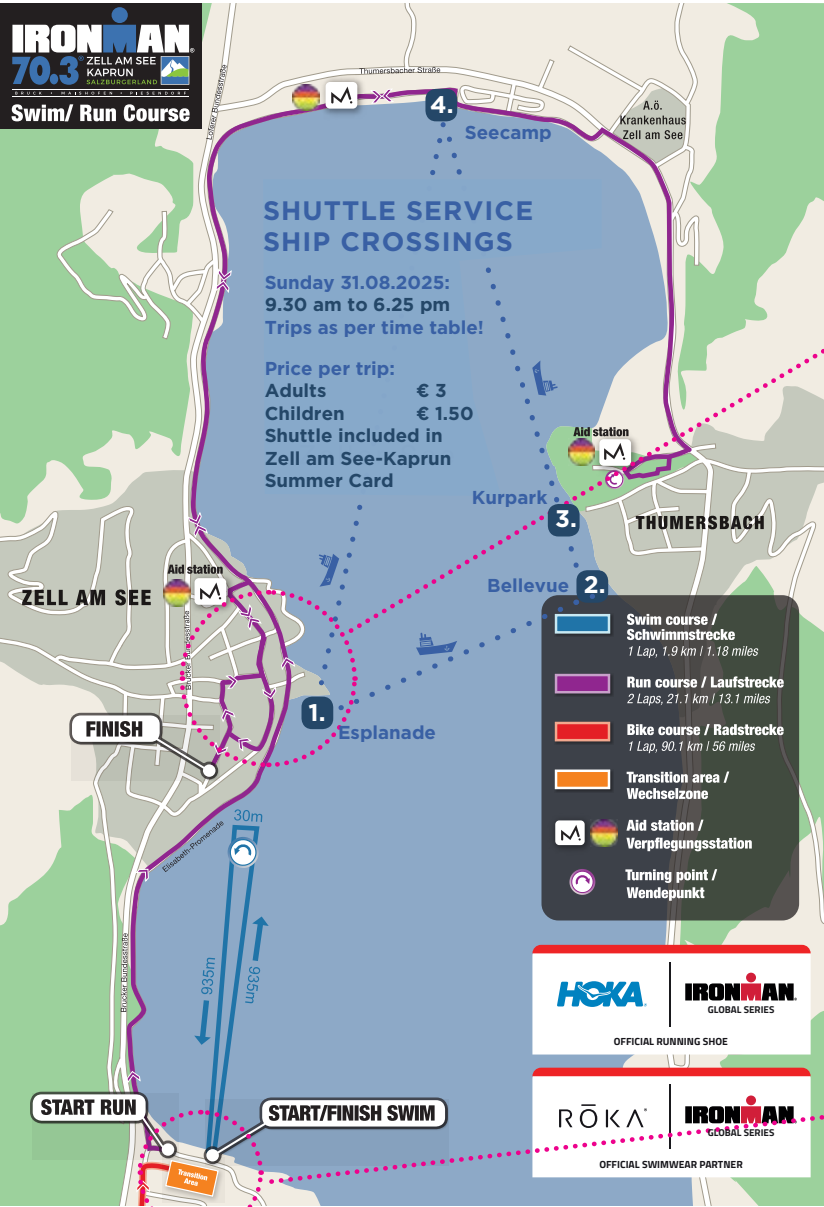
No.	Affected streets	Closure time		Duration
		From	To	
1.	Sportplatzstraße, Karl-Vogt-Straße, Thomas-Bernhard-Weg, L247, Seeuferstrasse from Fischhorn to L247 Zeller Strasse at height "Lukashansl"	11 am	5.05 pm	06:05 h
2.	L 257 Zeller Strasse from "Lukashansl" to crossroads Bruck/Ost – approach B 311 Pinzgauer Strasse	11 am	1.15 pm	02:15 h
3.	Crossroads Bruck/Ost – B 311 Pinzgauer Strasse to B 311 Taxenbach – interchange Embach/Dienten	11 am	1.55 pm	02:55 h
4.	L 216 from interchange Taxenbach/Embach-Dienten to junction with B 164 Hochkönigstrasse	11 am	2.30 pm	03:30 h
5.	B 164 Dienten from junction with L 216 via Maria Alm to Saalfelden – interface Letting/Bsuch/Gerling	11.45 am	3.15 pm	03:30 h
6.	From junction B 164 Hochkönigstrasse and Hof/Deuting/Gerling/Schloss Kammer to approach B 311 Maishofen	12 pm	3.45 pm	03:45 h
7.	B 311 from Maishofen via Zell am See north entrance to Schüttdorf junction B 168 (hotel Latini)	12 pm	4.00 pm	04:00 h
8.	B 168 Piesendorf to Zell am See junction B 168 (hotel Latini)	12.15 pm	4.30 pm	04:15 h
9.	L 215 from round about Fürth Kaprun to junction Sigmund-Thun-Strasse/Schlossstrasse	12.30 pm	4.30 pm	04:00 h
10.	From the crossing Sigmund-Thun-Strasse/Schlossstrasse over the Salzach and right onto the Salzachuferstrasse to the crossing Gewerbestrasse	12.30 pm	4.50 pm	04:20 h
11.	From junction Gewerbestrasse/Salzachuferstrasse via Kaprunerstrasse/Krösenbachstrasse/Glocknerstrasse to junction Glocknerstrasse/ L 257 Zeller Strasse ("Lukashansl")	12.30 pm	4.50 pm	04:20 h
	B311 Schmitten tunnel	12.15 pm	4.15 pm	04:00 h

Road closure due to RUNNING RACE  
between 1.30 pm and 8 pm

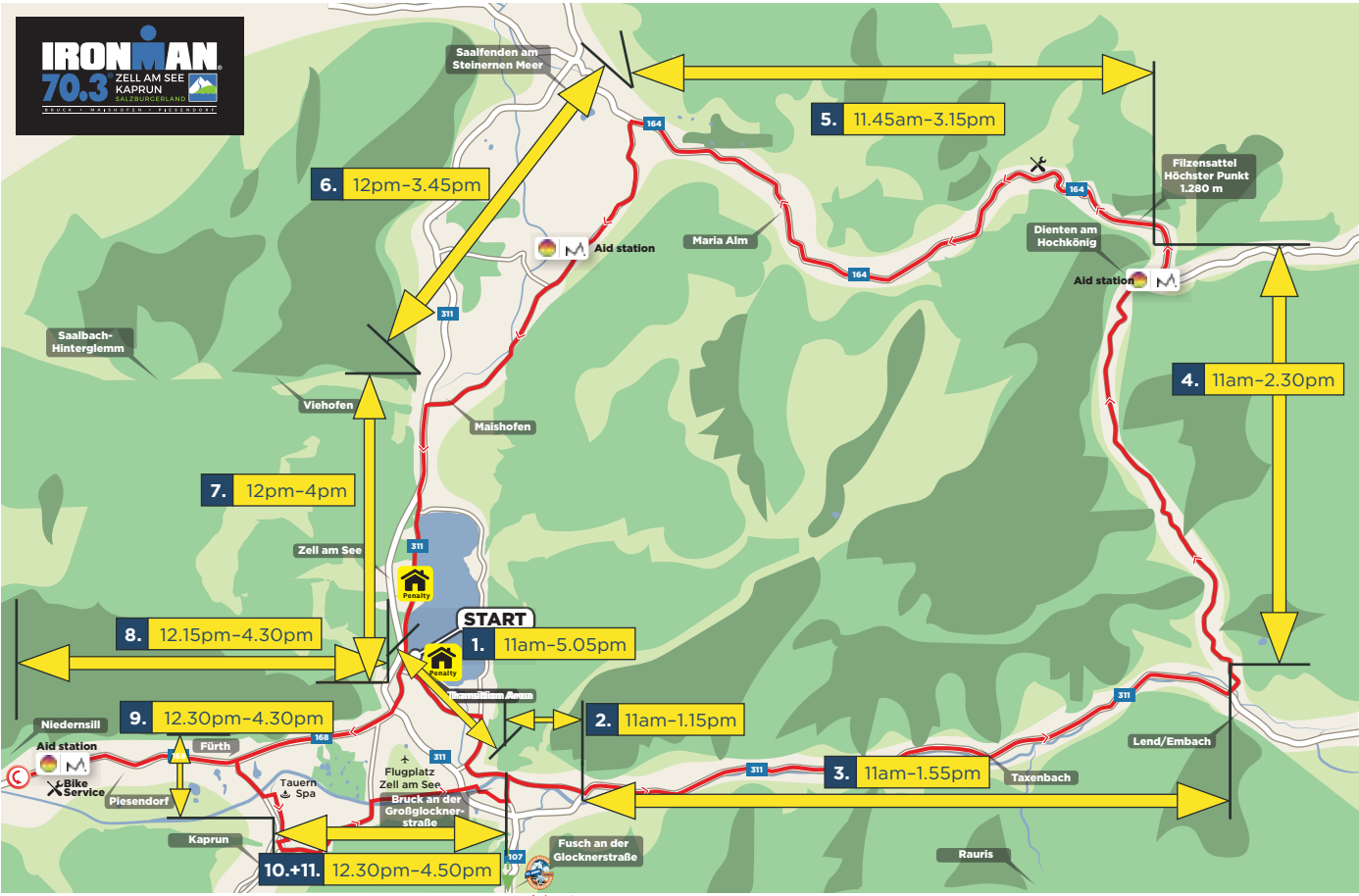
In Zell am See
Closure of Seespitzstrasse between the youth hostel and the railway.
Closure of the lake promenade for the cyclists in the area between the top of the lake and the hospital.
Closure of one side of the Thumersbacher Landesstrasse between the hospital and Thumersbach from 11 am to 8 pm.
Closure of Strubergasse underpass – Saalfeldner Strasse – Sebastian-Hörl-Gasse – Anton-Wallner-Strasse – Turmgasse
Salzmannstrasse between Seegasse and Seehofgasse

SWIMMING and RUNNING COURSE

Sunday between 1.30 pm and 8 pm in Zell am See



For further questions, please send an e-mail to:  
[ok-zell@100percent-sport.de](mailto:ok-zell@100percent-sport.de) or call the hotline 06542/770-39 | Infos: [www.zellamsee-kaprun.com/ironman](http://www.zellamsee-kaprun.com/ironman)



## FREE SHUTTLE FOR EVERYONE

### PINZGAU RAILWAY:

Zell am See – Niedernsill – Zell am See

**Saturday:** per timetable from Zell am See to Niedernsill

**Sunday:** per timetable between 8 am and 9 pm from Zell am See to Niedernsill

### POSTBUS:

Zell am See – Kaprun – Thumersbach – Piesendorf, Maishofen and Bruck

**Saturday:** within timetable of SVV lines 70, 71 and 660

**Sunday:** within timetable of SVV lines 70, 71, 640 to 680 between 8 am and 7 pm (no ride possible at race time between 11 am and 4.30 pm)

### INFORMATION FROM GROSSGLOCKNER HIGH ALPINE ROAD

On 31 August 2025 there may be limited access to the roads approaching the Grossglockner High Alpine Road due to the "IRONMAN 70.3 in ZELL AM SEE-KAPRUN".

**RECOMMENDATION: Sunday, 31 August 2025:** access from Lend until 11 am and from 1.55 pm; approach possible from Piesendorf-Walchen until 12.15 pm and from 4.30 pm; approach possible from Saalfelden until 12 pm and from 4 pm. The ticket office in Ferleiten/Fusch is open from 5.30 am. There is unrestricted access via the approach from Zell am See Schüttdorf via the B 311. There is nothing to stop you visiting the Grossglockner High Alpine Road provided that you finish your visit in good time. More information about exhibitions, themed trails, free guided tours etc. in the Grossglockner High Alpine Road adventure world under [www.grossglockner.at](http://www.grossglockner.at).